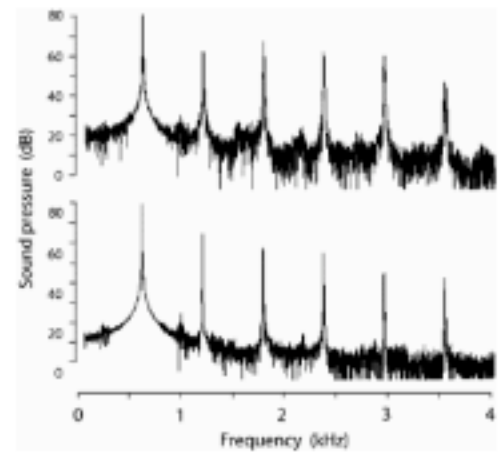


Old bones: Hard evidence for early human music ... and the origin of musical scales



Professor Jelle Atema

Boston University Marine Program

4-5 PM Thursday Nov. 29.

Bezanson Recital Hall, UMass Amherst



As a young child Jelle Atema stalked animals in the forest and cut little flutes from hollow reeds. Jelle studied biology at the University of Utrecht, the Netherlands, and flute with Jean- Pierre Rampal during summers in Nice, France. He moved to the USA where he now lives by the sea in Woods Hole, Massachusetts. He is Professor of Biology at the Boston University Marine Program, where he and his students study chemical signals asking fish, lobsters, snails and robots how they make sense out of underwater odour patterns. Jelle Atema continues to perform on the flute and has also commissioned chamber music works.

Pan Dec 2004.

Hosted by:

Music & Dance Dept.

OEB Program

NSB Program

Biology Dept.

