

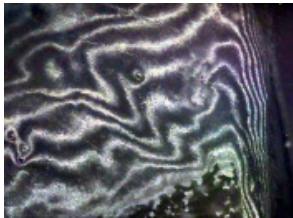
Lobster blocks proceeding to 0.25 um diamond

From KunkelLabWiki at URL http://marlin.bio.umass.edu/biology/kunkel/LabWiki/index.php/Lobster_blocks_proceeding_t0_0.25_um_diamond

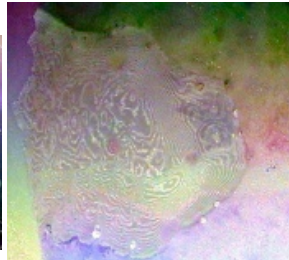
F-3B 3um to 0.25um
3um at 1X



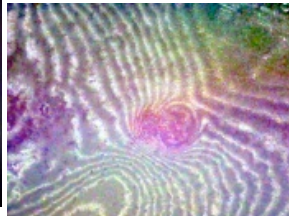
F-3B 7X



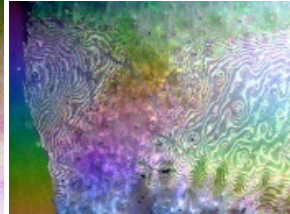
F-4 1X



F4 7X



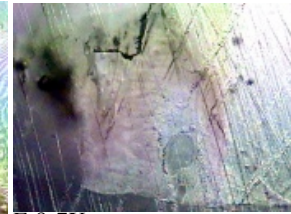
F-6 1X



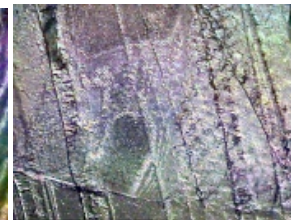
F-6 7X



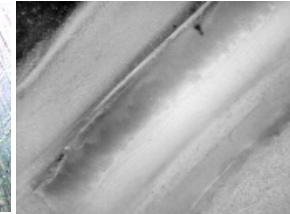
F-8 1X



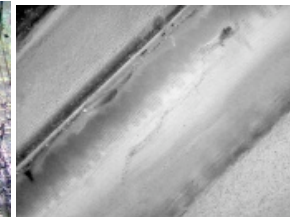
F-8 7X



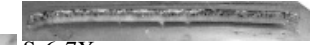
S-5 7X



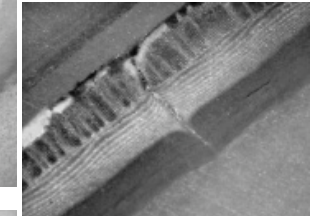
more S-5 7X



S-6



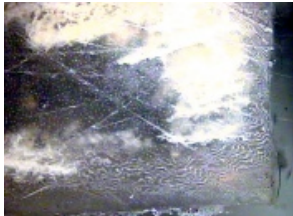
S-6 7X



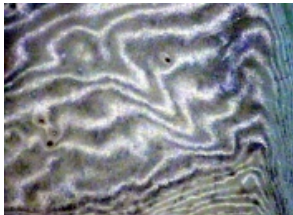
S-6 7X



F-3B 1X 0.25um diamond at 1X



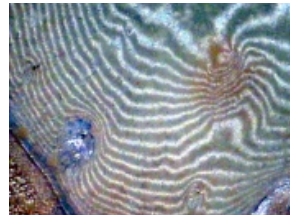
F-3B 7X



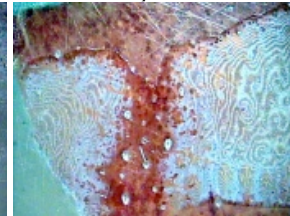
F-4 1X 0.25um



F4 7X



F-6 1X 0.25 μ



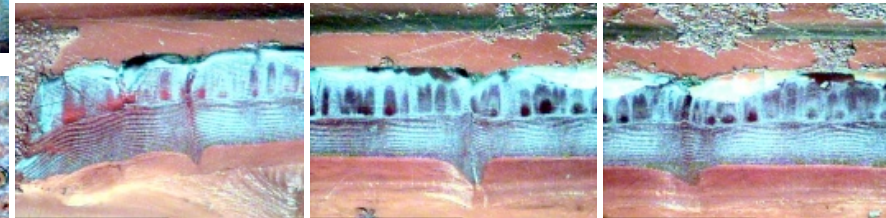
F6 7X



S-6 7X-collage 0.25



S-6 7X



- F-3 Booth Bay Blue Lobster with empondment shell disease -50°C Acetone
- F-4 Other Booth Bay lobster has empondment shell disease -50°C Acetone
- F-6 and S-6 are Pine Point control healthy lobsters in my tanks for x months and into -50°C Acetone.